

**Housing Material:** 1.4571

**Nominal diameter:** DN15, DN20, DN25

**Connections:**

- Flange DN15, DN20, DN25 acc. DIN EN 1092-1
- Flange ½", ¾", 1" to ANSI B 16.5, Class 150 & 300
- Female thread G½", G¾", G1" (BSP) acc. DIN ISO 228-1
- Female thread ½", ¾", 1" NPT acc. ANSI B 1.20.1

**Nominal pressure stage:** PN 25

**Housing volume:** 1,2 liter

**Housing operation limits:**

Max. operating pressure (bar g)	25	23	20	19
Max. operating temperature (°C)	100	200	350	400

**Weight:** Depends on connections from 3,5 to 5,0 kg

**Media:** Air, gases, steams, aggressive media.

**Function:** Increasing level opens and decreasing level closes the outlet without delay, independent of pressure and temperature fluctuations.

**Special characteristics:** Only one movable point since the rotary-slidevalve is both swivel joint and shut-off device.

**As option at additional charge:**

- Connection for pressure compensating line
- Internal vent jet (steam only)
- Submerged gas-tight float control for hazardous media (up to 100°C)
- Connection for a limit switch as option for electronic control
- Screw plug for discharge the trap

**Installation:**

- Horizontal model (WO-1177-N): lateral inlet and outlet.
- Angular model (EF-1178-N): inlet at the top, lateral outlet.

**Function limit:**

Cross section	max. line pressure in bar g
IIs	18
IIs-GD*	10
IIs-GD*max	22
IV-GD*	4
IVs	5

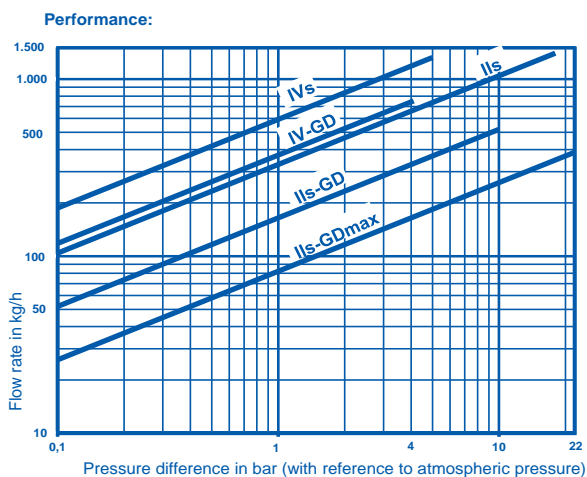
\* GD: gastight under-level float control for cold media

**CE Mark:**

The pressure equipment is in accordance with the Pressure Vessel Directiv 2014/68/EU, Article 4, subsection 3 and bears no CE mark.

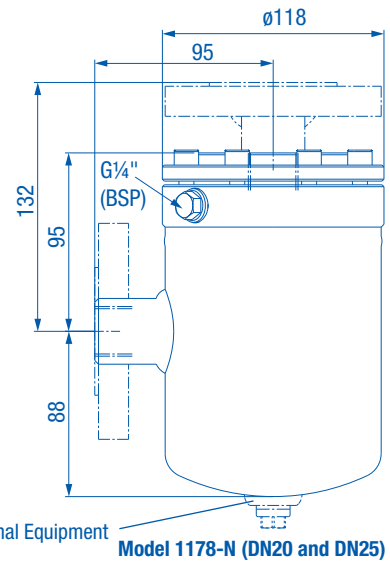
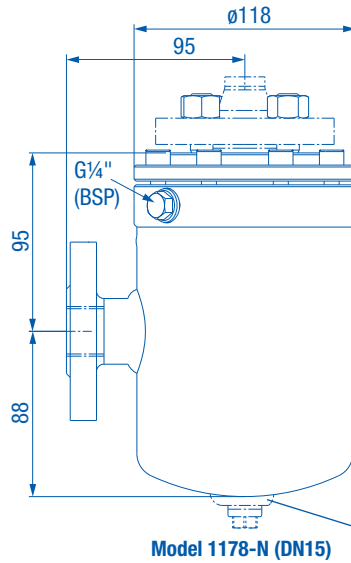
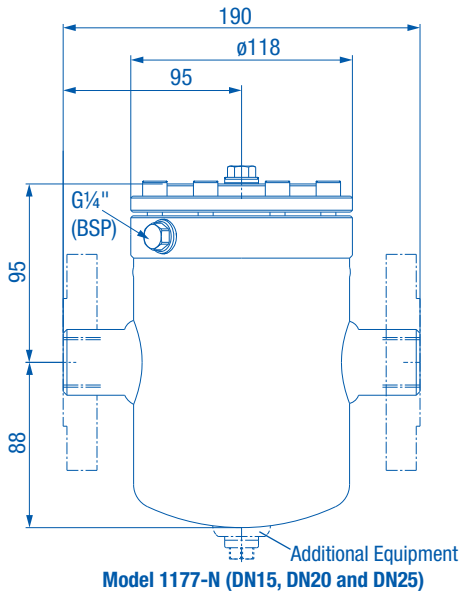
**Please state the following when making inquiries/placing orders:**

Medium, density, initial pressure, counter-pressure, temperature, quantity of condensation (kg/h).



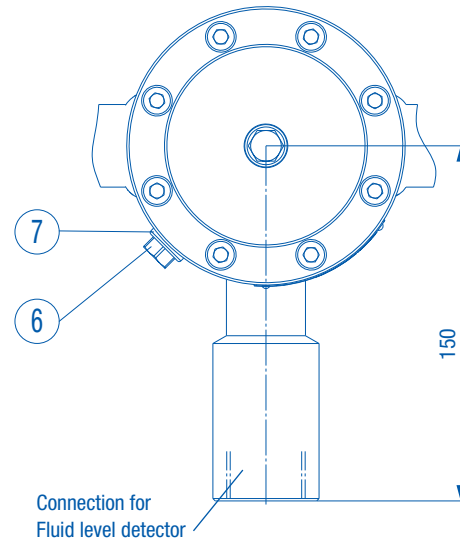
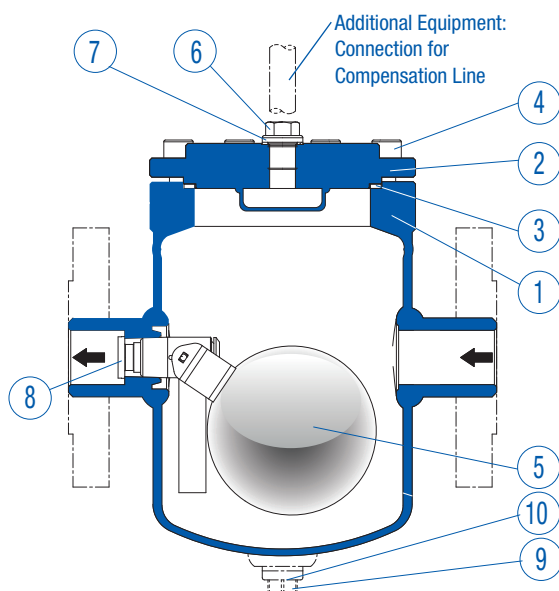
**For very low pressures:**

Pressure difference in bar g	Flow rate in kg/h			
	IV-GD	IIs	IIs-GD	IIs-GDmax
0,02	53	23	19	4
0,04	74	33	26	6
0,06	91	40	32	8
0,08	105	47	37	9


**Dimensions (in mm), Weight (in kg)**

Connection	Flanges		Threaded	
	15/ 20	25	1/2"-3/4"	1"
DN				
Weight	4,5	5	3,5	4

## Spare Parts



To ensure correct part supply please specify the works standard sheet number 1177-N / 1178-N, connection size, part number for spare part orders, cross-section for float control assembly spare part orders.

\* PTFE-Spec. is only applicable up to 250°C!

\*\* Single parts of the subassemblies cannot be supplied because of the requirements to tightness.

1	<b>Housing:</b> 1.4571
2	<b>Housing cover:</b> 1.4571
3	<b>Housing gasket:</b> PTFE-Spec.* or 1.4571
4	<b>Housing screw:</b> ISO 4762 - A4-80-M8
5	<b>Float control assembly**:</b> 1.4571
6	<b>Control screw:</b> A4-70 - G1/4" (BSP)
7	<b>Gasket:</b> PTFE-Spec.* or 1.4571
8	<b>Retaining screw:</b> A4-70
9	<b>Screw plug:</b> A4-70 - G1/4" (BSP)
10	<b>Gasket:</b> PTFE-Spec.* or 1.4571