

**Housing-Material:** 1.4571

**Nominal diameter:** DN10, DN15, DN25

**Connections:**

- DN 10 - DN 25, clamp-connection acc. DIN 32676

**Nominal pressure stage:** PN 6

**Working media:** Steam / -condensate.  
Not applicable for media of fluid group 1.

**Function:** A special liquid contained within the capsule evaporates or condenses due to changes in temperature. The operating temperature is only a few degrees below the boiling point of water. When the temperature rises, the liquid evaporates and the valve closes; when the temperature drops, the liquid condenses and the valve opens.

**Special characteristics:**

Wafer-type design for DIN and Speciallength. Due to the very slight temperature drop, accumulation of the condensate is reduced. The capsule reacts to temperature changes immediately. This system ensures prevention of losses in live and control steam and is insensitive to water hammer and back pressure.

**Installation:** Horizontal or vertical

**Function limit:**

Max. pressure difference in bar g	3	3,5
Max. temperature in °C	145	143

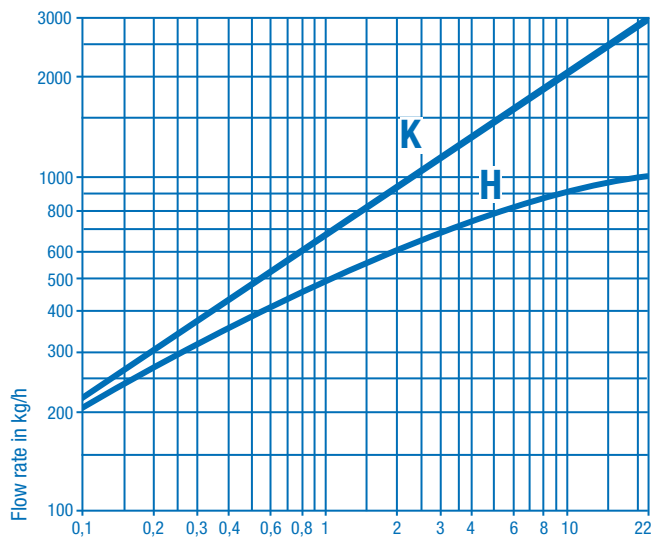
**Control unit:** Pressure limit for operating PM0 = 22bar

**CE - Mark:**

The pressure equipment described is a pressure-keeping component in accordance with the Pressure Vessel Directive 2014/68/EU article 4, subs. 3 and bears no CE-mark.

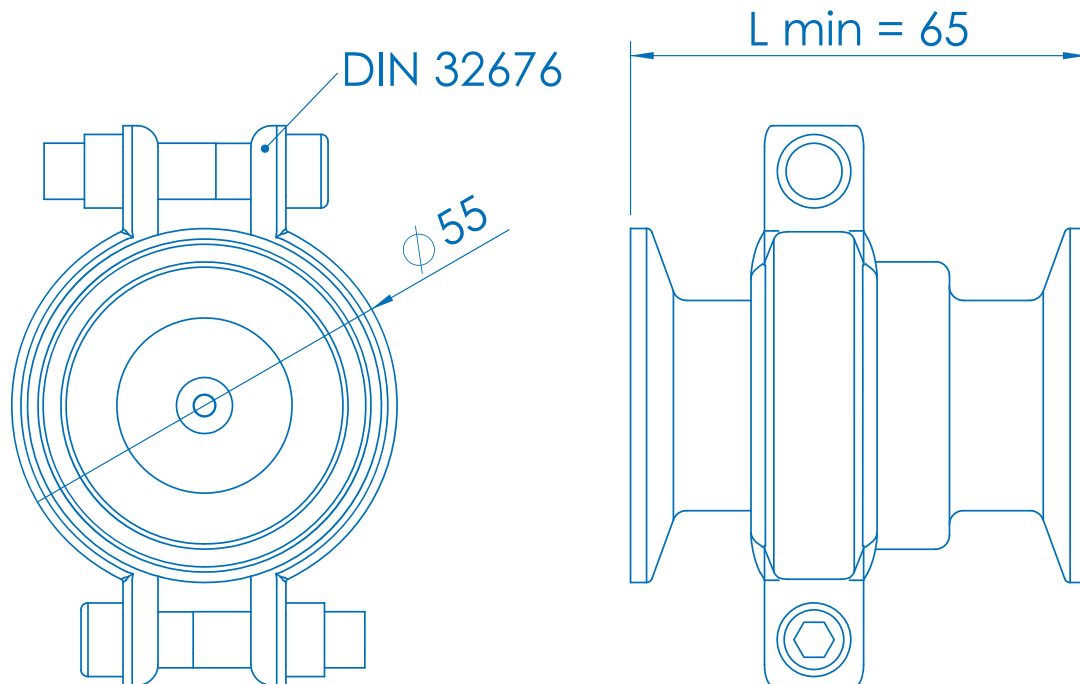
**Please state the following when making inquiries / placing orders:** Medium, density, initial pressure, counter pressure, temperature, quantity of condensation (kg/h).

**Performance:**



Pressure difference in bar (with reference to atmospheric pressure)

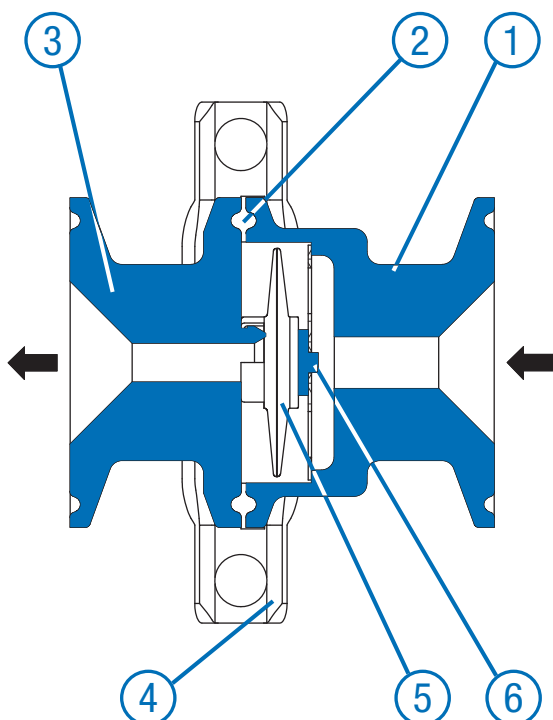
The above diagram shows flow rates of cold condensate (K) and hot condensate (H) at approx. 10°C undercooling.



The installation dimension can be extended on request.

Dimensions in mm, Weight app. 0,5 kg

## Part List



1 Inlet housing: 1.4571

2 Housing gasket: EPDM

3 Outlet housing: 1.4571

4 Clamp: 1.4103

5 Capsule: Edelstahl / 2.4610

6 Holder: 1.4571

To ensure correct delivery, specify works standard sheet number 10260-N and the connection.