

Rp	Nb	DESIGNATION		MATIERE/MATERIAL
01	1	CORPS	BODY	1.0625/A216WCC
03	1	JOINT RACCORD SIEGE	SEAT GASKET	GRAPHITE ou/ou PTFE
04	1	RACCORD SIEGE	SEAT	1.4404/AISI 316L
08	1	SOUPAPE	DISC	1.4404/AISI 316L
09	1	DEFLECTEUR	DISC-HOLDER	1.4404/AISI 316L
10	1	VIS D'ARRET	SCREW	INOX/STAINLESS STEEL
11	1	BILLE	BALL	1.4404/AISI 316L
12	1	TIGE	STEM	1.4404/AISI 316L
14	1	GUIDE TIGE	STEM GUIDE	1.4404/AISI 316L
15	1	BAGUE COUPELLE INF. (DN40/50)	RING (DN40/50)	1.0736/AISI 1215
16	1	COUPELLE INFERIEURE	UNDER SPRING PLATE	1.0736/AISI 1215
17	1	RESSORT	SPRING	1.4310/AISI 302 OU/OR INCONEL 600
18	1	COUPELLE SUPERIEURE	UPPER SPRING PLATE	1.0736/AISI 1215
22	1	VIS REGLAGE	ADJUSTMENT SCREW	1.0736/AISI 1215
23	1	C/ECROU VIS REGLAGE	LOCK NUT	1.0060/A 288 gr C
26	1	JOINT DE BOUCHON	PLUG GASKET	GRAPHITE ou/ou PTFE
27	1	BOUCHON DN 8 à 32 DN 40/50	PLUG ND 8 to 32 ND 40/50	1.0625/A216WCC 1.0060/A 288 gr C
55	1	VIS DE BLOCAGE	BLOCKING SCREW	INOX / STAINLESS STEEL
56	1	ECROU	NUT	INOX / STAINLESS STEEL
62	1	JOINT	GASKET	1.4301/ AISI 304L
63	1	VIS	SCREW	INOX / STAINLESS STEEL

- SOUPAPE DE SURETE ACIER CARBONE  
- BOUCHON ETANCHE SANS LEVIER  
- RACCORDEMENT :  
ENTREE=FILETTE GAZ CYLINDRIQUE OU NPT  
SORTIE=TARAUDEE GAZ OU NPT  
BP=BASSE PRESSION-PN40  
MP=MOYENNE PRESSION-PN100  
HP=HAUTE PRESSION-PN420

-AUTRES CONDITIONS DE SERVICE, RACCORDEMENTS  
ET MATERIAUX SUR DEMANDE.  
-MATERIEL CONFORME A LA DIRECTIVE 97/23/CE

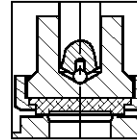
- CARBON STEEL SAFETY RELIEF VALVE  
- TIGHT PLUG WITHOUT LEVER  
- CONNECTIONS :  
INLET=THREADED CYLINDRICAL BSP OR NPT  
OUTLET= SCREWED END BSP OR NPT  
BP=LOW PRESSURE-PN40  
MP=MEDIUM PRESSURE-PN100  
HP=HIGH PRESSURE-PN420

-OTHER WORKING CONDITIONS, CONNECTIONS AND  
MATERIALS ON REQUEST  
-MATERIAL CONFORM TO DIRECTIVE 97/23/CE

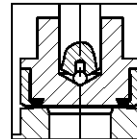
RACCORDEMENT CONNECTION				A	B	C	P.D.O (bar) SET PRESSURE MINI 0,20 bar			SECTION DE PASSAGE CROSS SECTION (mm <sup>2</sup> )			POIDS WEIGHT (Kg)			
DN	ENTREE INLET GAZ ou NPT	SORTIE OUTLET					Maxi			BP	MP	HP		BP	MP	HP
		GAZ	NPT				BP	MP	HP							
08	1/4"	3/4"	3/4"	38	61	215	40	80	250	28	28	28	1,8			
10	3/8"	3/4"	3/4"	38	61	215	40	80	250	50	50	28	1,8			
15	1/2"	3/4"	3/4"	38	61	215	40	80	250	113	50	28	1,8			
20	3/4"	1.1/4"	1"	43	67	255	40	80	250	177	113	50	3			
25	1"	1.1/4"	1"	43	67	255	37	80	250	254	113	50	3			
32	1.1/4" (GAZ)	1.1/4"		43	67	255	27	60		346	177		3			
40	1.1/2"	2"	2"	80	100	470	40	60		707	452		11			
50	2"	2"	2"	80	100	470	27	60		1018	452		12			

### VARIANTES OTHER POSSIBILITIES

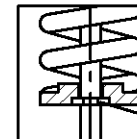
SOUPAPE A PORTEE PTFE  
DISC WITH PTFE GASKET  
TYPE 510 ART (20 bar maxi)



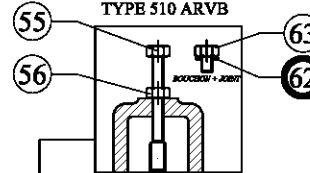
SOUPAPE A JOINT TORIQUE FPM ou EPDM  
DISC WITH O'RING FPM or EPDM  
TYPE 510 ARJT ou 510 ARJEP (20 bar maxi)



COUPELLE  
UNDER SPRING PLATE DETAIL  
DN40/50



VIS DE BLOCAGE  
BLOCKING SCREW  
TYPE 510 ARVB

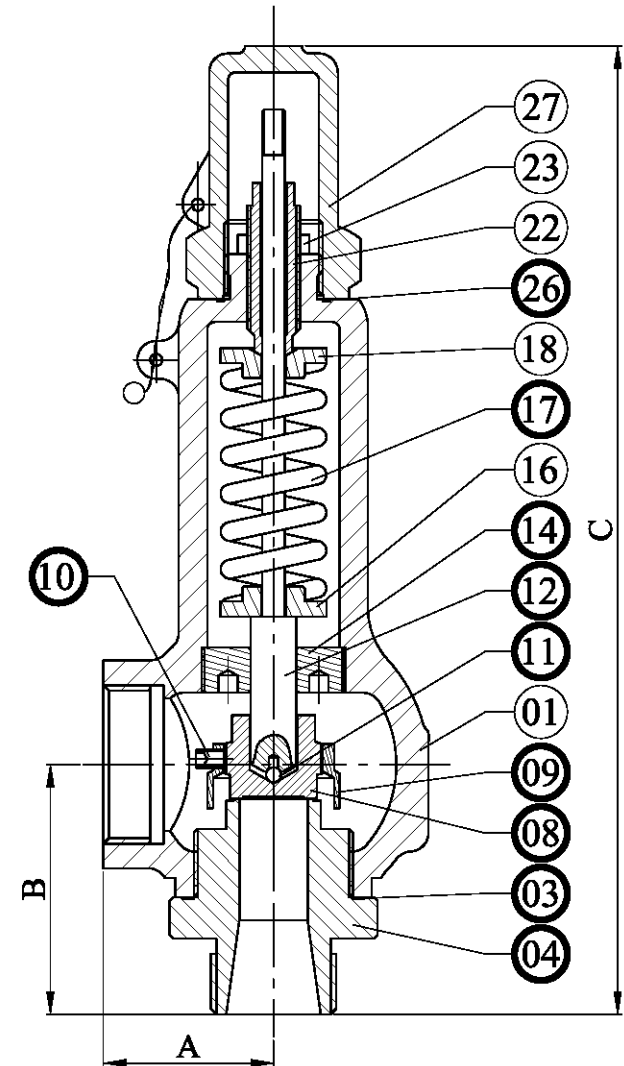


ATTENTION!

VIS DE BLOCAGE MECANISME - A REMPLACER PAR BOUCHON + JOINT AVANT MISE EN SERVICE  
BLOCKING SCREW SHOULD BE REPLACED BY SCREW+GASKET BEFORE USE

PIECES DE RECHANGE CONSEILLEES  
RECOMMENDED SPARE PARTS

CE DOCUMENT PEUT ETRE MODIFIE SANS AVIS PREALABLE  
ALL SPECIFICATIONS SUBJECT TO CHANGE WITHOUT NOTICE



B	07/03/08	Mise à jour PN250=>PN420 / Up dating PN250=>PN420	SCHMUNCK	DEBILLE
<b>SOUPAPE DE SURETE</b> <b>SAFETY RELIEF VALVE</b> <b>TYPE 510ARBP-ARMP-ARHP</b> <b>DN 08/.../50 - GAZ OR NPT - PN 40/100/420</b>			<b>3510 A</b>	