

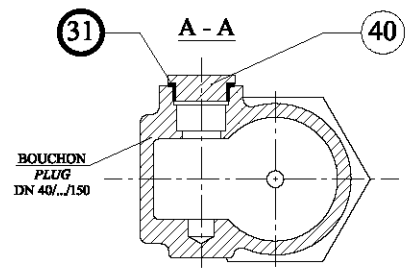
Rp	Nb	DESIGNATION	MATIERE/MATERIAL
01	1	CORPS	BODY
02	1	BOUCHON DE PURGE	DRAIN PLUG
03	1	JOINT DE SIEGE	SEAT GASKET
04	1	SIRGE	SEAT
07	2	VIS DE LIAISON	SCREW
08	1	SOUPAPE	DISC
09	1	DEFLECTEUR	DISC-HOLDER
10	1	VIS D'ARRET	SCREW
11	1	BILLE	BALL
12	1	TIGE	STEM
13	2	JOINT DE CORPS	BODY GASKET
14	1	GUIDE TIGE	STEM GUIDE
16	1	COUPELLE INFERIEURE	UNDER SPRING PLATE
17	1	RESSORT	SPRING
18	1	COUPELLE SUPERIEURE	UPPER SPRING PLATE
19	1	FUT	SHANK
20	1	VIS DE CORPS	BODY SCREW
22	1	VIS DE REGLAGE	ADJUSTMENT SCREW
23	1	C/VIS DE REGLAGE	LOCK NUT
26	1	JOINT DE BOUCHON	PLUG GASKET
27	1	BOUCHON	PLUG
31	1	JOINT D'OBTURATEUR (DN40/ ... /150)	GASKET CAP
40	1	OBTURATEUR (DN40/ ... /150)	CAP
55	1	VIS DE BLOCAGE	BLOCKING SCREW
56	1	ECROU	NUT
58	1	BUTEE A BILLES (DN 80 / ... / 150)	THRUST BALL BEARING
62	1	JOINT	GASKET
63	1	VIS	SCREW
65	1	PLOMBAGE	PLUMBING

- SOUPAPE DE SURETE ACIER CARBONE A BUSE COURTE
- BOUCHON ETANCHE SANS LEVIER
- RACCORDEMENT ENTREE/SORTIE
BRIDES INTEGRALES - PN 16 x 16 ou PN 40 x 16
- CLASS 150 x 150 ou CLASS 300 x 150

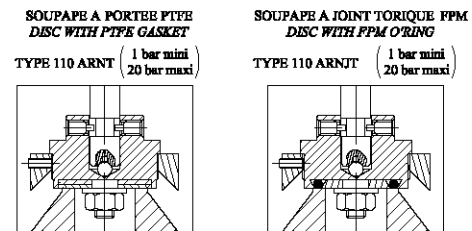
- AUTRES CONDITIONS DE SERVICE,
RACCORDEMENTS ET MATERIAUX SUR DEMANDE.
- MATERIEL CONFORME AUX DIRECTIVES 97/23/CE ET 94/9/CE

- CARBON STEEL SAFETY RELIEF VALVE WITH SEMI-NOZZLE
- TIGHT PLUG WITHOUT LEVER
- CONNECTION INLET/OUTLET
INTEGRAL FLANGE - PN 16 x 16 or PN 40 x 16
- CLASS 150 x 150 or CLASS 300 x 150

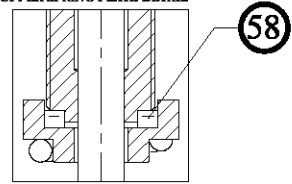
- OTHER WORKING CONDITIONS,
CONNECTIONS AND MATERIALS ON REQUEST
- MATERIAL CONFORM TO DIRECTIVES 97/23/EC AND 94/9/CE



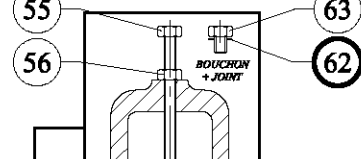
**VARIANTES
OTHER POSSIBILITIES**



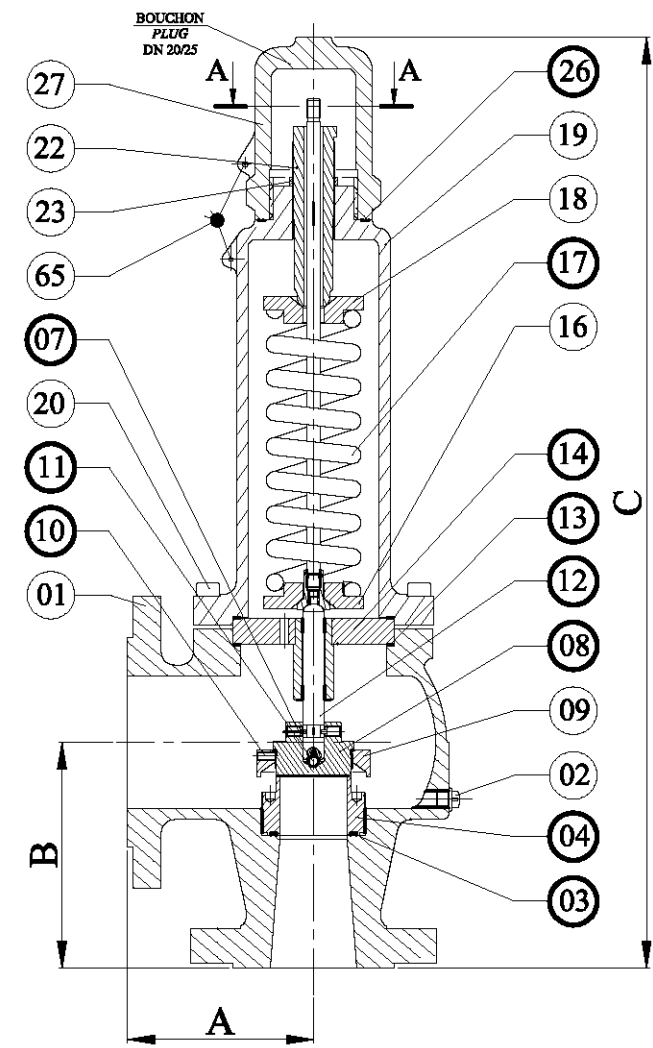
DETAIL COUPELLE SUPERIEURE
DN 80-100-125-150
UPPER SPRING PLATE DETAIL



VIS DE BLOCAGE
BLOCKING SCREW
TYPE 110 ARN VB



ATTENTION!
VIS DE BLOCAGE MECANISME - A REMPLACER PAR BOUCHON + JOINT AVANT MISE EN SERVICE
BLOCKING SCREW SHOULD BE REPLACED BY SCREW + GASKET BEFORE USE



PIECES DE RECHANGE CONSEILLEES RECOMMENDED SPARE PARTS
CE DOCUMENT PEUT ETRE MODIFIE SANS AVIS PREALABLE ALL SPECIFICATIONS SUBJECT TO CHANGE WITHOUT NOTICE

ENTREE INLET		SORTIE OUTLET		A	B	C	P.D.O (bar) SET PRESSURE				SECTION DE PASSAGE CROSS SECTION		POIDS WEIGHT (Kg)
PN 40	CLASS 300/150	PN 16	CLASS 150				MINI 0,25 bar				(mm ²)		
							MAXI				110 ARN	110 ARNT	
							PN 16	CL150	PN 40	CL300	110 ARNT	110 ARN VB	
20	3/4"	40	1.1/2"	100	105	430		20	40	50	380	227	18
25	1"	40	1.1/2"	100	105	430		20	40	50	380	227	18
40	1.1/2"	65	2.1/2"	115	140	615		20	40	50	1018	660	30
50	2"	80	3"	120	150	635		20	40	50	1590	1018	35
65	2.1/2"	100	4"	140	170	710	16		40		1963	1735	55
80	3"	125	5"	160	195	870	16	20	40	40	3317	2827	80
100	4"	150	6"	180	220	915	16	20	25	25	5024	4071	110
125	5"	200	8"	200	250	975	16		16		7850	6647	120
150	6"	250	10"	225	285	1110	10	10	10	10	13266	7850	180

B	15/01/09	MISE A JOUR / UP DATING	OZIL	DBELLE
		SOUPAPE DE SURETE SAFETY RELIEF VALVE TYPE 110 ARN - DN 20/ .../150 PN16 - PN40 / CL150 - CL300		
3110 A				

Impress: "Les Bellizans"
69380-CHEBBY-LES-MINES
Tel: 33(0)4.78.43.91.52
Fax: 33(0)4.78.43.91.01
www.valves.com